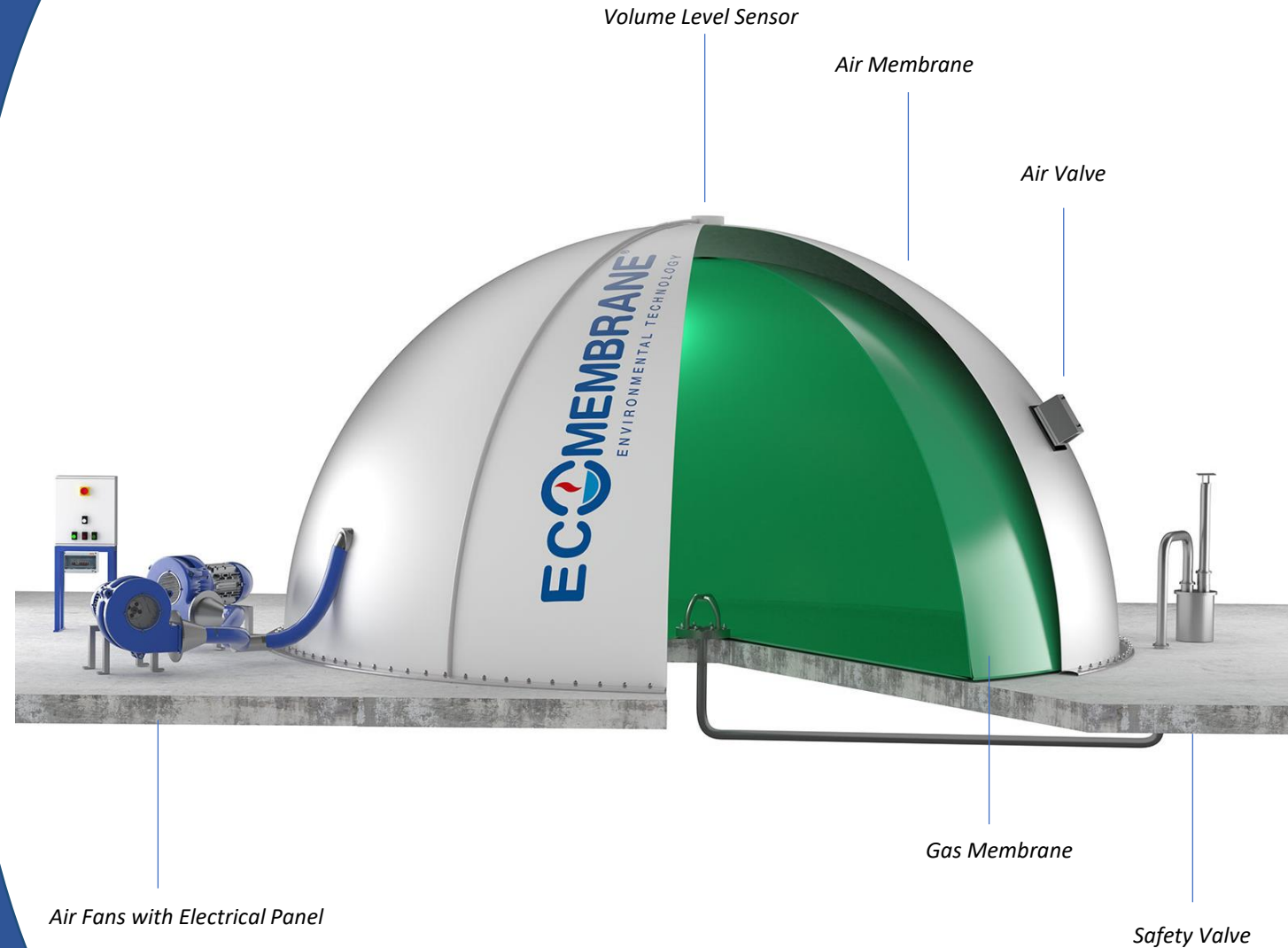




2MASTER Gasholder



- Designed to store biogas made from anaerobic digestion and organic waste and sludge;
- Membrane made of double-sided PVC coated polyester fiber fabric, UV-microbial-abrasion-biogas resistant, flame retardant B1 according to DIN4102, built with strips of membrane cut;
- Manufacturing: welded with a high frequency electronic welding and shaped to obtain the gas-holder form;
- The welding edges are covered with an Eco-Safe layer of pure PVC that stops every porosity of the fibres to the biogas. The welding process is made following the quality rules of ISO 9001.



2MASTER *Gasholder*

MAIN FEATURES

- High Storage Volume;
- High Gas Flow rate;
- Shape Variability:
 $\frac{1}{2}$ sphere – $\frac{3}{4}$ sphere – rectangular shape

ECCOMEMBRANE®
ENVIRONMENTAL TECHNOLOGY



2MASTER Gasholder

MAIN COMPONENTS

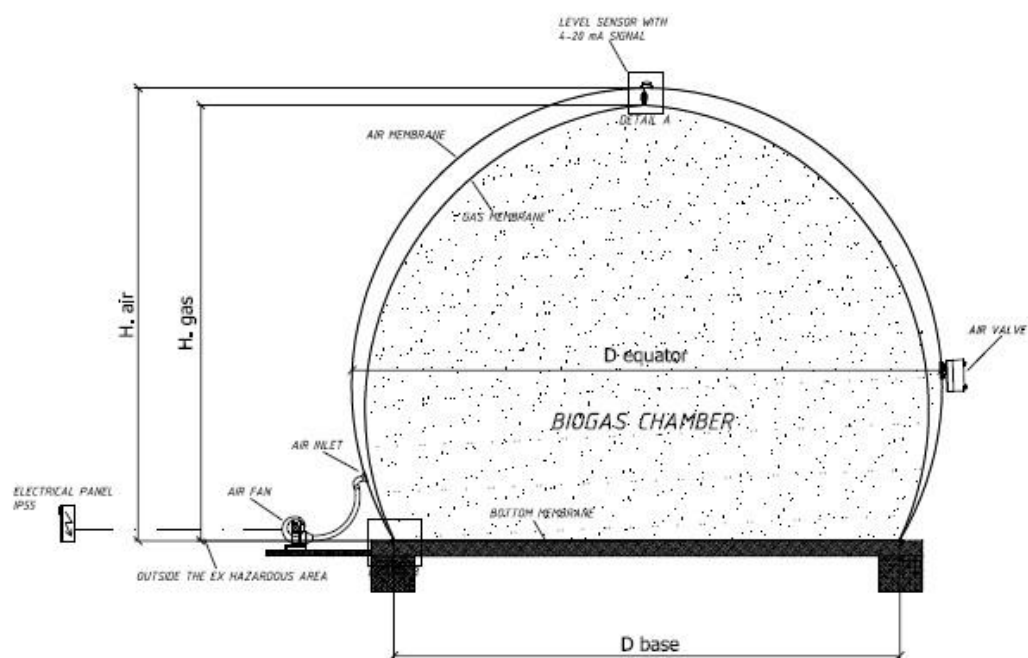
- Anchorage System;
- Air Fan;
- Air Valve;
- Hydraulic Safety Valve;
- Inspection Window;
- Volume Level Sensor 4-20mA

OPTIONAL

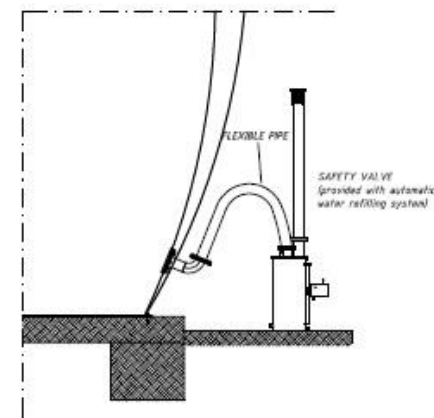
- ❖ Methane Detector
- ❖ Air Pressure Transmitter with display



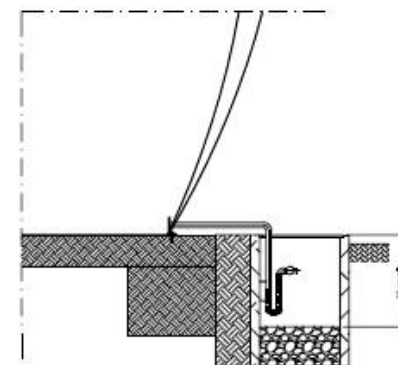
	½ Sphere		¾ Sphere	
V (m³)	Ø _{max} (m)	H (m)	Ø _{max} (m)	H (m)
10	3,40	2,20	3,20	2,70
30	4,90	2,95	4,50	3,60
50	5,80	3,40	5,20	4,20
80	6,80	3,90	6,00	4,80
100	7,30	4,15	6,50	5,10
150	8,40	4,70	7,40	5,80
200	9,20	5,10	8,10	6,30
250	9,90	5,45	8,70	6,80
300	10,50	5,75	9,20	7,10
400	11,60	6,30	10,10	7,80
450	12,00	6,50	10,50	8,10
500	12,50	6,75	10,80	8,40
570	13,00	7,00	11,30	8,70
600	13,20	7,10	11,50	8,90
700	13,90	7,45	12,00	9,30
800	14,60	7,80	12,60	9,70
900	15,10	8,05	13,10	10,10
1.000	15,70	8,35	13,50	10,40
1.200	16,70	8,85	14,30	11,00
1.500	17,90	9,45	15,40	11,80
1.800	19,10	10,05	16,40	12,50
2.000	19,70	10,35	16,90	13,00
2.200	20,40	10,70	17,50	13,40
2.500	21,30	11,15	18,20	13,90
3.000	22,60	11,80	19,30	14,80
3.500	23,80	12,40	20,30	15,50
4.000	24,90	12,95	21,20	16,20
4.500	25,90	13,45	22,10	16,80
5.000	26,80	13,90	22,80	17,40
6.000	28,50	14,75	24,20	18,40
8.000	31,30	16,15	26,60	20,20
10.000	33,70	17,35	28,70	21,80
12.000	35,80	18,40	30,50	23,10
14.000	37,70	19,35	32,00	24,30
16.700	40,00	20,50	34,00	25,70



GASHOLDER

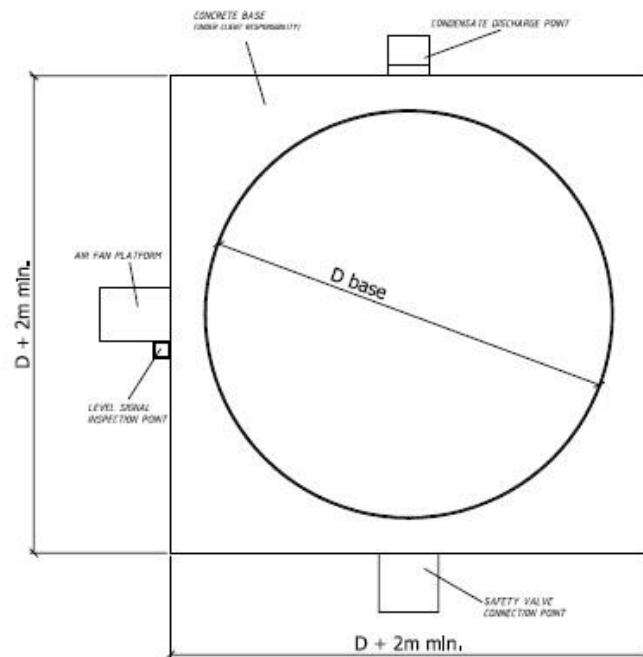


SAFETY VALVE CONNECTION

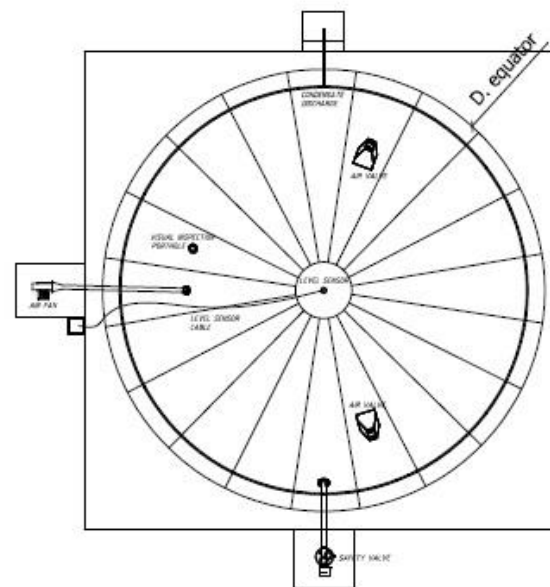


CONDENSATE DISCHARGE

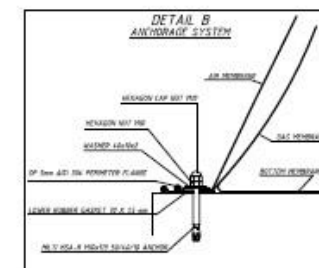
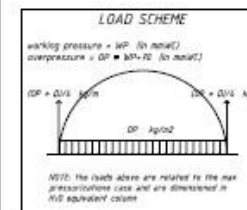
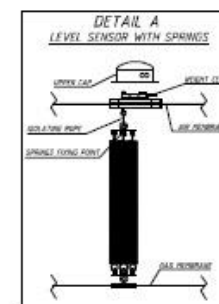
2MASTER
¾ sphere
<500 m³



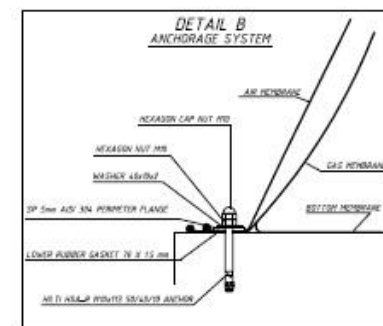
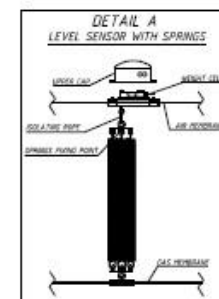
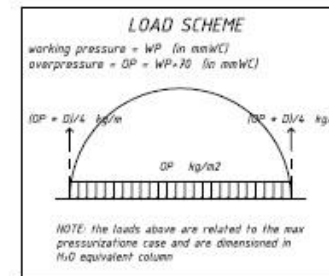
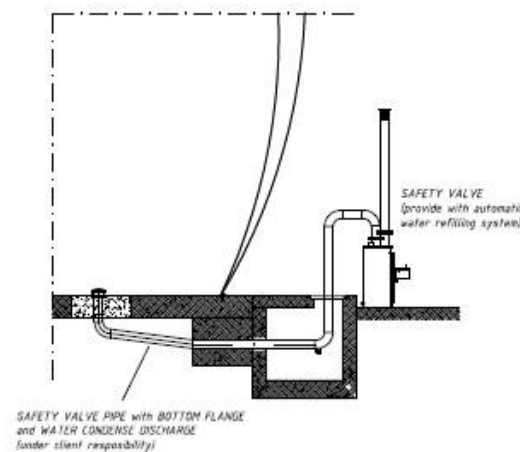
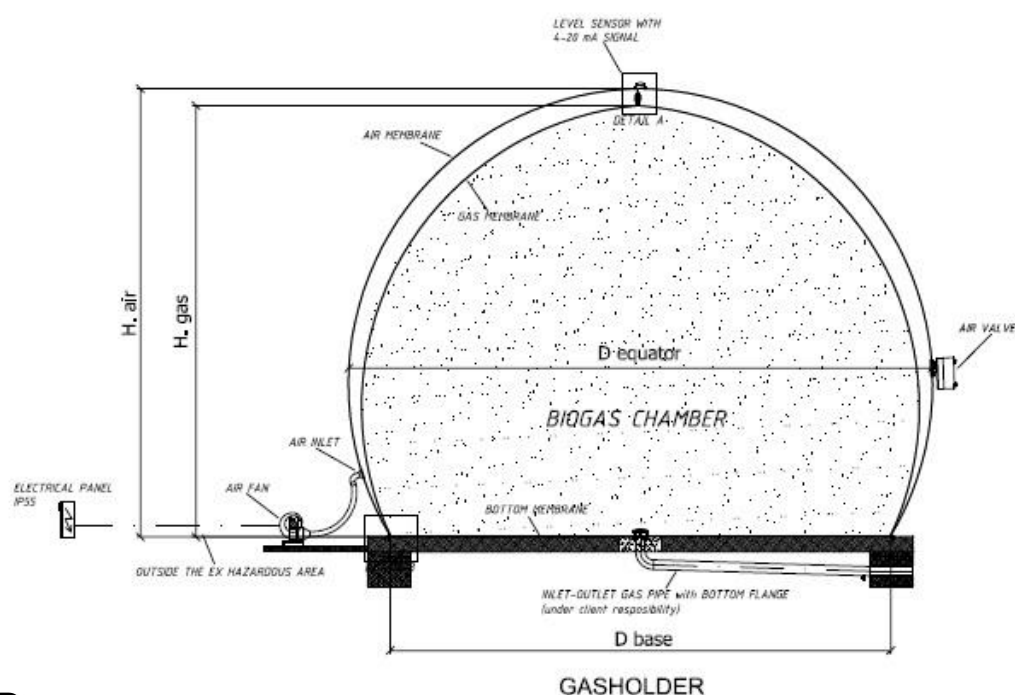
PERIMETER FLANGE



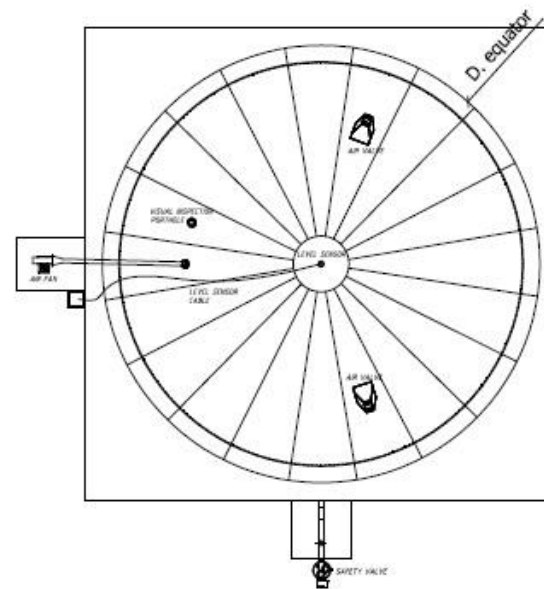
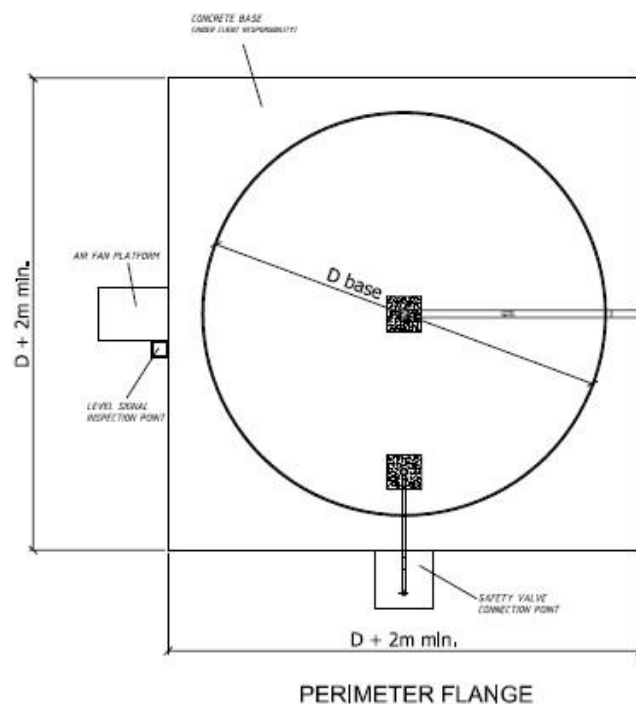
POSITION OF THE ACCESSORIES



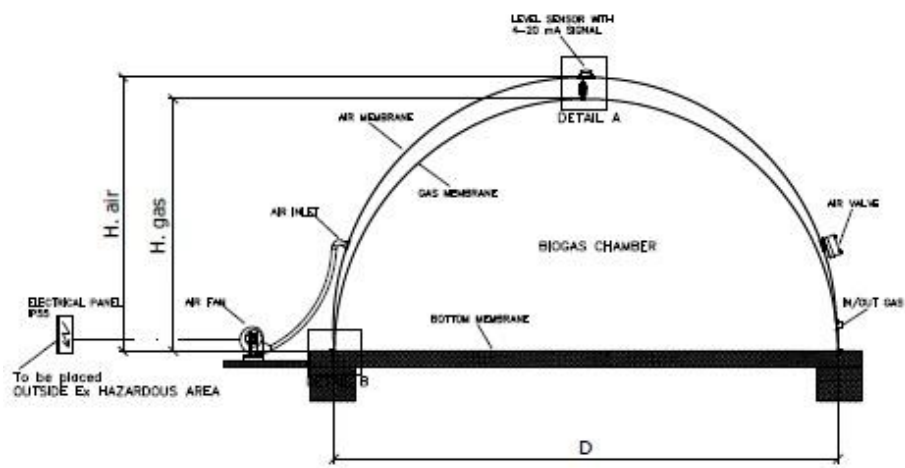
DRAFT
DRAWING NOT IN SCALE



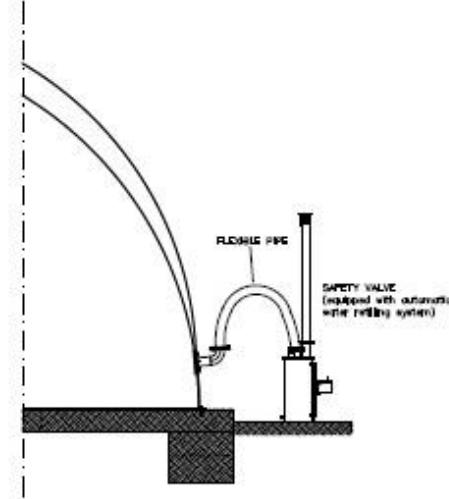
2MASTER
¾ sphere
>500 m3



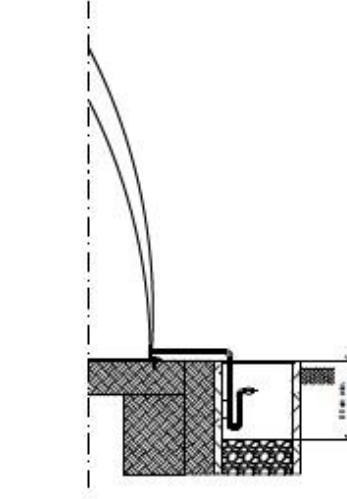
DRAFT
DRAWING NOT IN SCALE



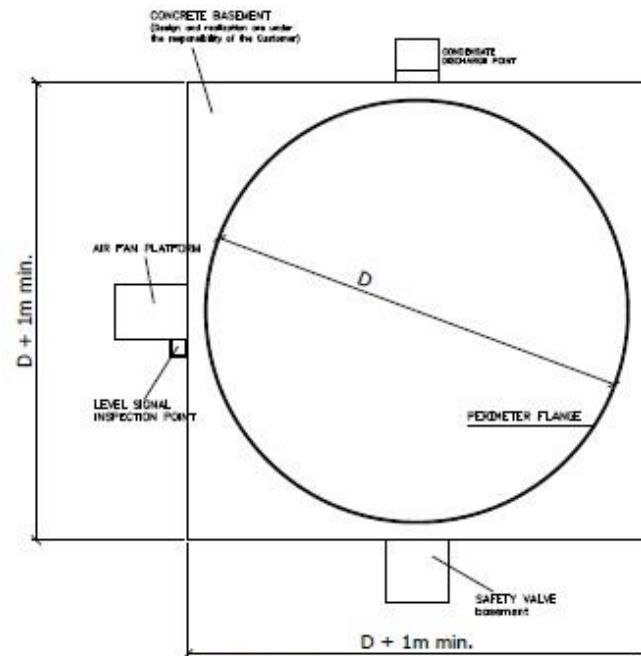
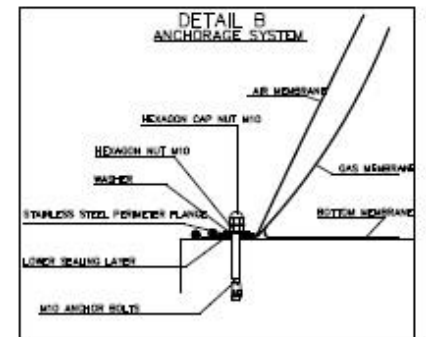
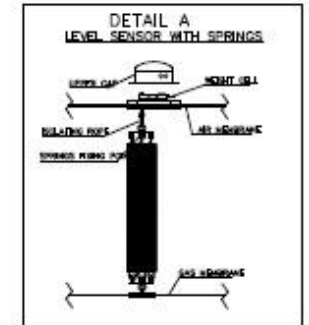
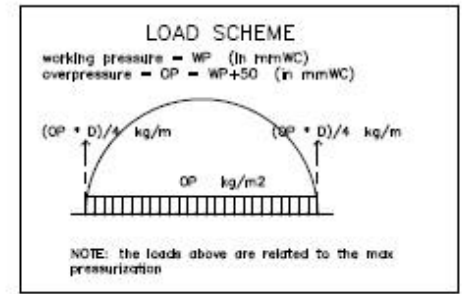
GASHOLDER



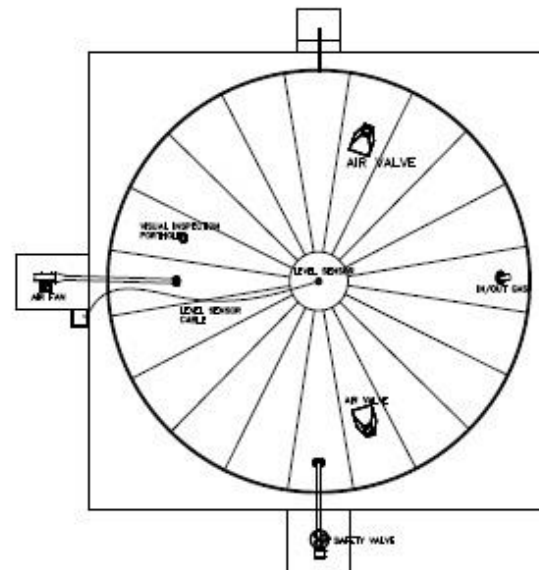
SAFETY VALVE CONNECTION



CONDENSATE DISCHARGE POINT



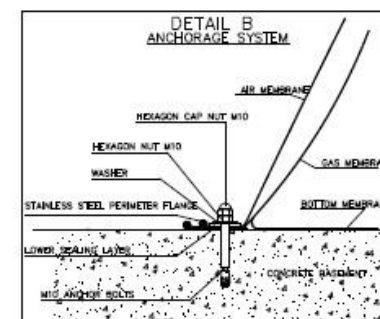
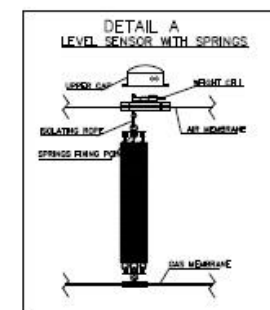
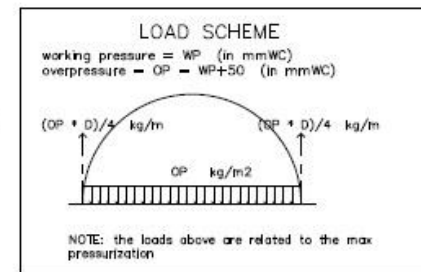
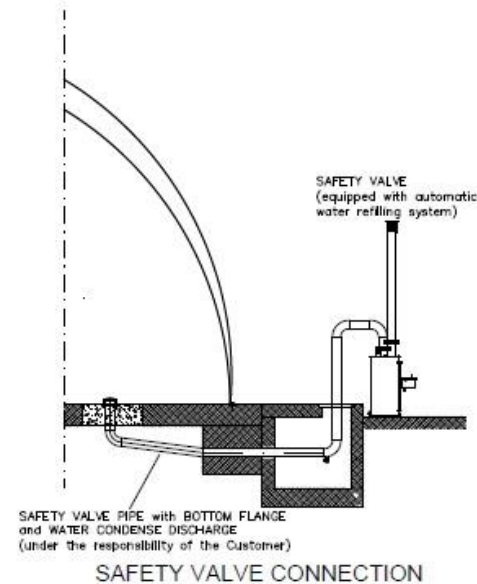
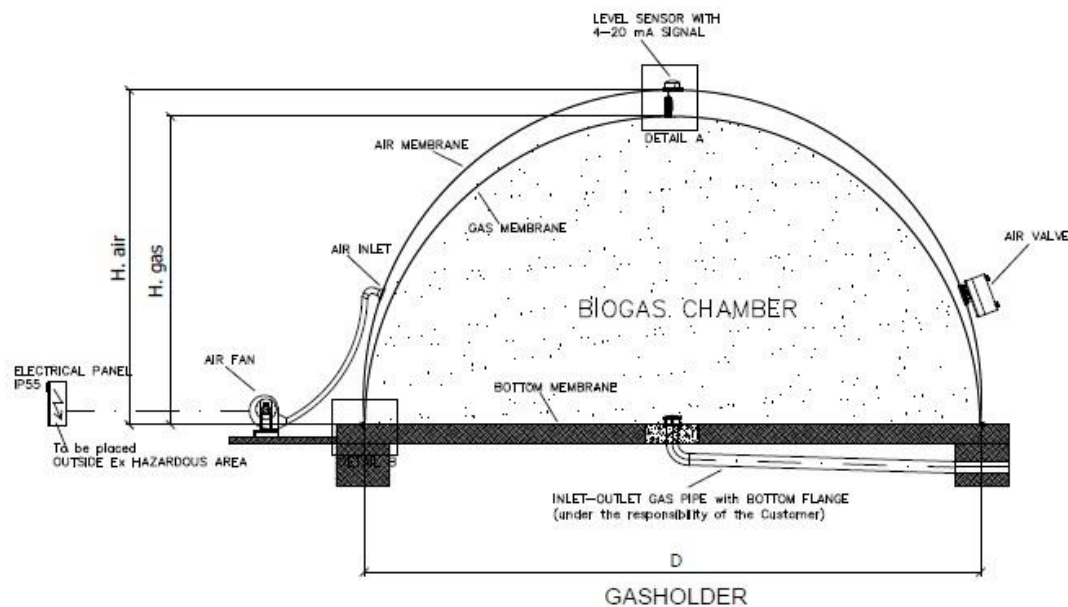
Plan view
 BASEMENT AND PERIMETER ANCHOR



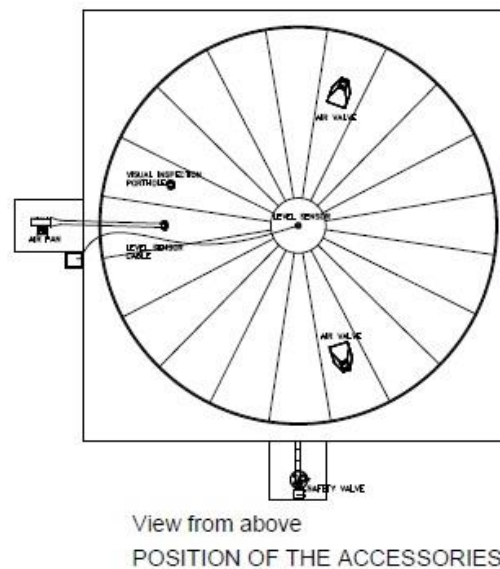
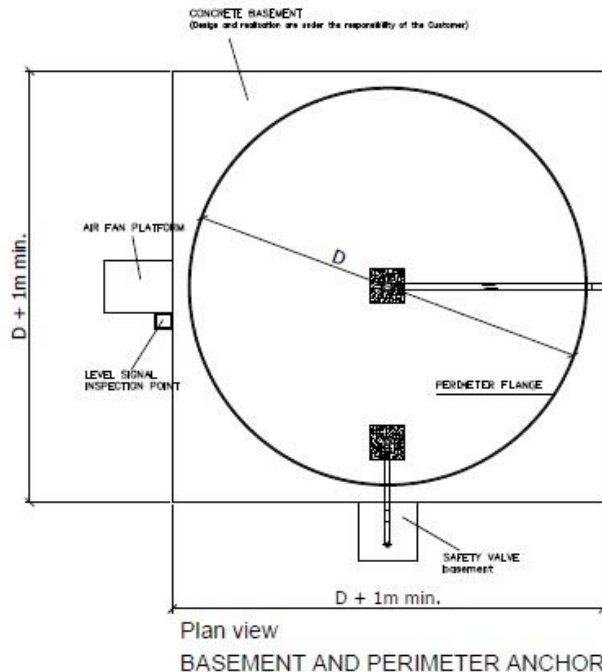
View from above
 POSITION OF THE ACCESSORIES

2MASTER
 ½ sphere
 <500 m³

DRAFT
 DRAWING NOT TO SCALE



2MASTER
½ sphere
>500 m3



DRAFT
DRAWING NOT TO SCALE