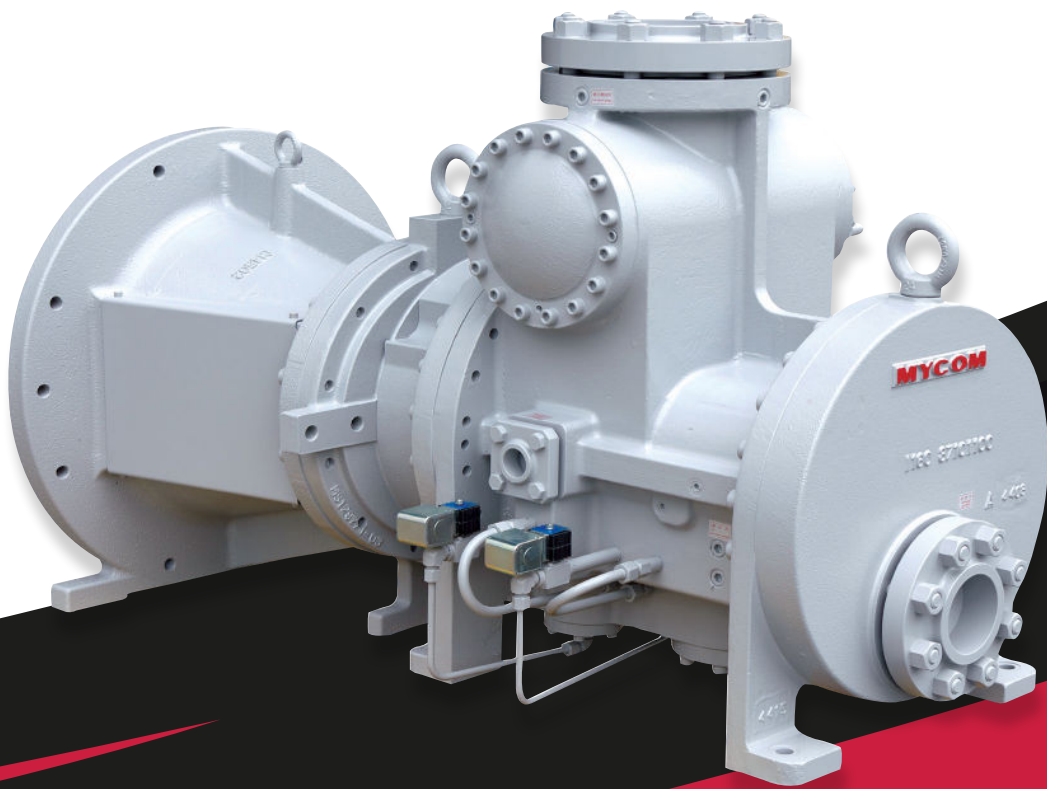


i

**MAYEKAWA**  
**MYCOM**

Series

Screw Compressor



**Single Stage  
Open Type**

<https://mayekawa.com/americas/mna>



Series

## i-Series Screw Compressor

Compact & Simple - A reliable cooling unit is realized

### FLANGED MOTOR MOUNT

The flanged motor eliminates the need for time consuming field alignment during startup.

### BUILT-IN SUCTION STRAINER AND CHECK VALVE

Integral suction strainer and check valve facilitate ease of maintenance.

### DIFFERENTIAL OIL FEED

Roller element bearings allow for differential oil low from startup. Therefore, no oil pump is required reducing energy and maintenance.

### UNLOADING SYSTEM

Three steps of unloading are available (100%, 75% and 50%) for quick and efficient load matching. Compressor speed control is available as an option.



### INTELLIGENT LAYOUT

The compressor layout is designed for simple piping reducing installation cost.

### HIGH EFFICIENCY, REDUCED VIBRATION AND LOW NOISE

Mayekawa's original rotor and casing design yields a threefold advantage in efficiency, vibration and noise.

### CAPACITY

Model \ Refrigerant	i125L				i160M			
	R717		R404A		R717		R404A	
	Cooling Capacity (kW)	Absorbed Power (kW)	Cooling Capacity (kW)	Absorbed Power (kW)	Cooling Capacity (kW)	Absorbed Power (kW)	Cooling Capacity (kW)	Absorbed Power (kW)
0	274.2	53.4	263.5	61.9	497.3	92.8	478.3	107.5
-5	225.7	52.4	217.7	61.3	409.6	91.0	395.5	106.6
-10	183.3	50.3	178.3	60.8	332.9	87.5	324.3	105.7
-15	148.3	47.9	144.6	60.4	269.6	83.3	263.3	104.9
-20	118.5	45.9	116.6	57.6	215.6	79.8	212.6	100.1
-25	93.3	44.2	92.9	55.2	170.0	76.8	169.8	95.9

⚠ This table is created based on Number-of-rotations : 2950 rpm, Condensing Temperature: +35℃, SH5K, SC:5K

## SPECIFICATIONS

Items			Model				
			i125S	i125L	i160S	i160M	i160L
Single unit weight	kg		330	350	490	530	570
	lbs		728	772	1,080	1,168	1,257
Standard speed 50Hz/60Hz	rpm		2950/3550				
Rotation direction	-		Clockwise as viewed from motor				
Gas	-		Methane, Propane, Propylene, CO2 <b>*Note 1</b>				
Design pressure <b>*Note 2</b>	MPa		2.6				
Capacity control	-		3-step (100%, 75%, 50%) unloader <b>*Note 3</b>				
Connecting pipe size	Suction flange	-	MYCOM 100A (4")		ANSI 300 # 5"		
	Discharge flange	-	MYCOM 65A (2-1/2")		ANSI 300 # 3"		
	Oil inlet port	-	Rc1/2		Rc1		
	Economizer	-	Rc3/8		Rc3/4		
	Aquamizer(Liquid injection)	-	Rc1/4		Rc1/2		

**\*Note 1:** Please contact Mayekawa for other gases.

**\*Note 2:** The design pressure varies according to each area, laws and ordinances of the country.

The design pressure of this list is the maximum value of the compressor. therefore, the real design pressure may become less than this value according to the law.

Please confirm real pressure on a name plate and individual specifications.

**\*Note 3:** Numerical values are calculated values.

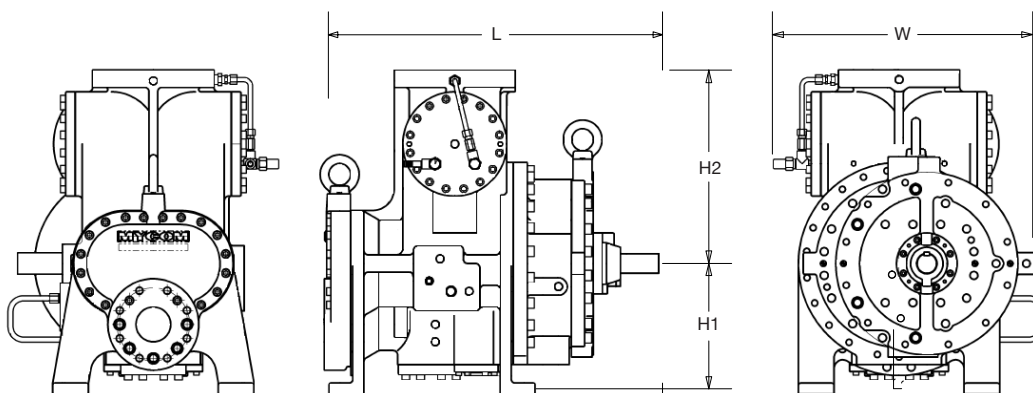
The actual rate of change in air volume varies depending on operating conditions.

Unless otherwise noted, the pressure unit MPa represents the gauge pressure.

For the limits of working temperature, pressure and speed, please read "Instruction Manual"

## DIMENSIONS

Dimensions are for reference only. Please contact MYCOM for more detailed drawings.



Dimensions(mm/inch)		L	W	H1	H2	H2 (Without Eyebolt)
Model						
i125S		656/25.83	470/18.5	280/11.02	519/20.43	448/17.64
i125L		726/28.58	470/18.5	280/11.02	519/20.43	448/17.64
i160S		722.5/30.41	618.5/24.35	300/11.81	---	445/17.51
i160M		817.5/32.19	618.5/24.35	300/11.81	---	445/17.51
i160L		862.5/33.96	618.5/24.35	311/12.24	---	434/17.08

**MAYEKAWA USA, INC.**  
<https://mayekawa.com/americas/mna>

**Tel:** +1 (615) 773-2859  
**24 Hr Service:** +1 (800) 836-9266  
**Email:** [info@mayekawausa.com](mailto:info@mayekawausa.com)

**MAYEKAWA CANADA, INC.**  
<https://mayekawa.com/americas/mna>

**Vancouver:** +1 (604) 270-1544  
**Calgary:** +1 (403) 250-1554  
**Toronto:** +1 (905) 564-0664